

Ecostat Comfort
Shower thermostat for exposed installation
 Finish: **Matt White** Article Number: **13116700**



Description

product features

- 1 function
- EcoStop button limits the water consumption to 10 l/min
- thermostat cartridge, ceramic valve 180°
- maximum flow rate at 3 bar: 17 l/min
- min. operating pressure: 1 bar
- max. operating pressure: 10 bar
- Safety stop at 40 °C
- temperature limitation adjustable
- non-return valve
- with silencer
- suitable for continous flow water heaters
- material handles: metal
- centre distance: 150 ± 12 mm
- connection dimension: DN15
- connection type: S-connections, G 1/2
- dirt filter included

Technology



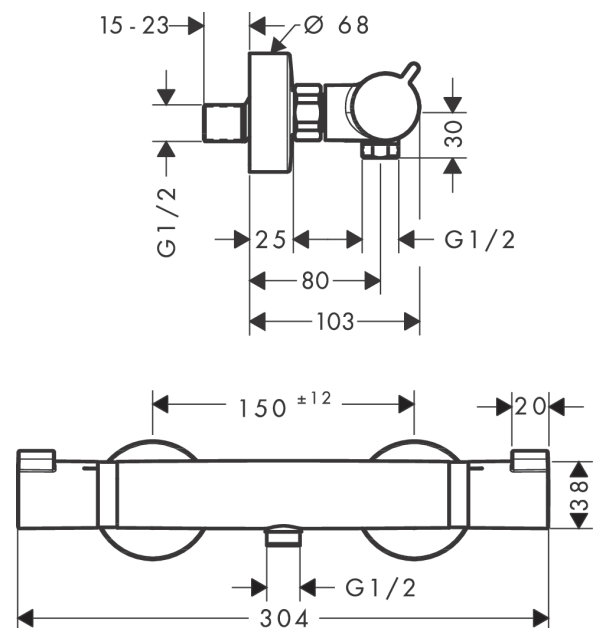
Design awards



Product image



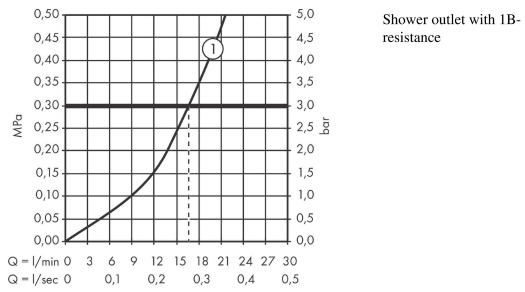
Scale drawing



Ecostat Comfort
Shower thermostat for exposed installation
 Finish: **Matt White** Article Number: **13116700**



Flowchart

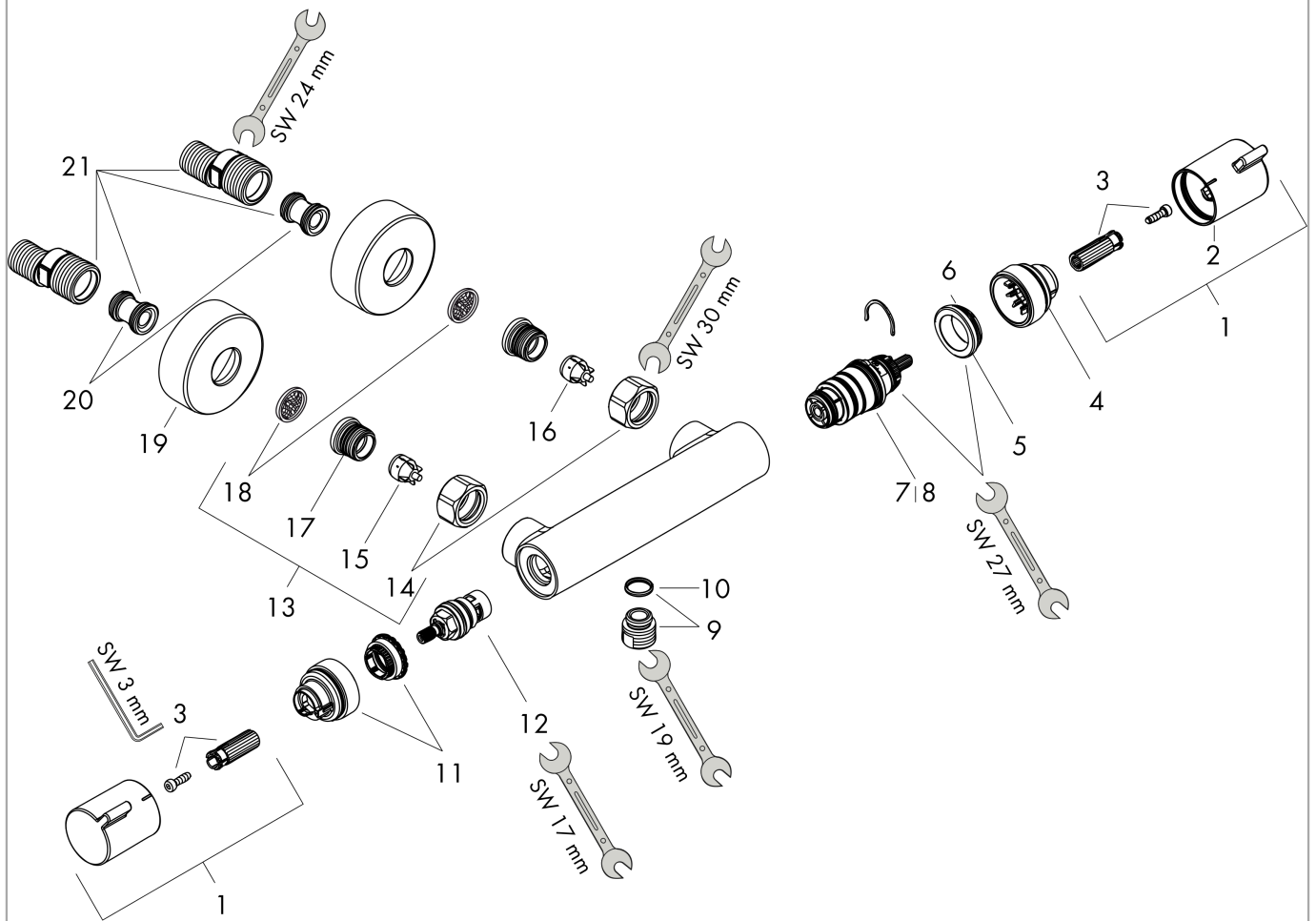


Ecostat Comfort
Shower thermostat for exposed installation
 Finish: **Matt White** Article Number: **13116700**



Exploded Drawing

Year of production: >07/19



Ecostat Comfort
Shower thermostat for exposed installation
 Finish: **Matt White** Article Number: **13116700**



Spare part list

Year of production: >07/19

Pos.	Description	Article Number	PC	PU
1	handle	95836700	58	1
2	pushbutton	92848700	52	1
3	handle fixing set	95843000	3	1
4	safety set	95839000	6	1
5	nut	98913000	6	1
6	O-ring 26x1,5	98390000	1	1
7	thermostat cartridge	98282000	14	1
8	cartridge for exchanged connections	92373000	18	1
9	connecting thread	95392700	56	1
10	O-ring 14x2	98129000	1	1
11	safety set	95841000	6	1
12	shut off unit	94149000	8	1
13	set of unions	94285700	62	1
14	set of nuts	96157700	58	1
15	non return valve (pressure-resistant up to 2 MPa)	93136000	8	1
16	non return valve	96737000	8	1
17	O-ring 17x1,5	98137000	1	1
18	filter packing	96922000	3	1
19	escutcheon Ø 68 mm	96467700	56	1
20	set of S-unions (±12 mm)	94140000	10	1
21	noise reduction	96429000	2	1
a	brake disc	92469000	3	1