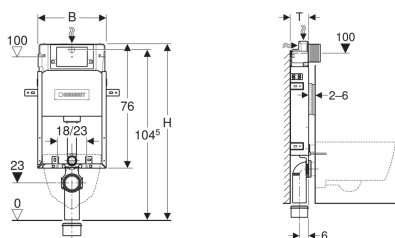


Geberit Kombifix element for wall-hung WC, 106 cm, with Alpha concealed cistern 12 cm



Application purposes

- For masonry walls
- For installation in part or room-height prewall installations
- For wall-hung WCs with connection dimensions in accordance with EN 33:2011
- For dual flush

Characteristics

- Zinc-plated mounting frame
- Mounting frame with four fastening brackets
- Connection bend can be mounted without tools
- Fastening for connection bend can be mounted without tools from front
- Concealed cistern with front actuation
- Concealed cistern, fully insulated against condensation

- Immediate post flush possible with factory setting
- Water supply connection on the rear or top centre
- Water supply connection, dezincification-resistant
- Protection cover box for service opening protects against moisture and dirt
- Protection box for service opening can be cut to length

Technical data

Flow pressure	0.1–10 bar
Flush volume, factory setting	6 / 3 l
Flush volume large, adjustment range	4 / 4.5 / 6 / 7.5 l
Flush volume small, adjustment range	2–4 l
Product material	Steel
Height-adjustable	No

Scope of delivery

- Water supply connection unit R 1/2", compatible with MasterFix and MeplaFix, with integrated angle stop valve and adapter ring
- Protection box for service opening
- Connection set for WC, \varnothing 90 mm
- Connection bend made of PE-HD, \varnothing 90 mm
- Adapter socket made of PE-HD, \varnothing 90 / 110 mm
- 2 protection plugs
- 2 threaded rods M12
- Fastening material

Art. no.	B	H	T
110.238.00.2	42 cm	106 cm	12 cm

Accessories

- Geberit Kombifix set of leg supports
- Geberit Kombifix set of studs with foot plate