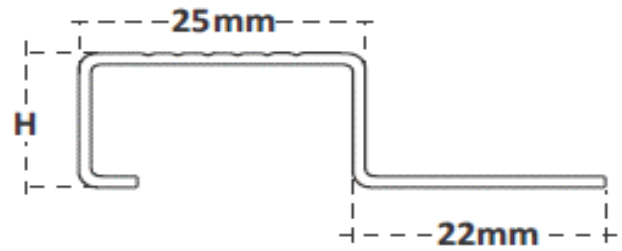
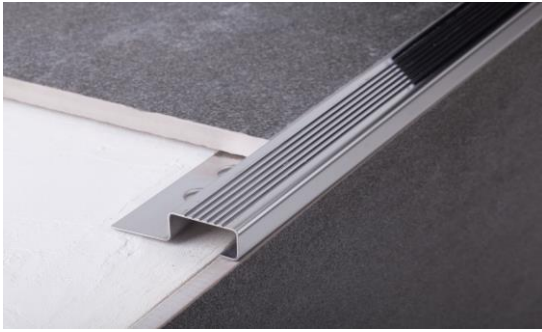


## Product Data Sheet

# Stainless Steel Edge Trim



## Stainless Steel Tile In Contractors Stair Nosing

Available in 10mm & 12mm

### Product Description

Stainless Steel edge trims are suitable for floor and wall edge decorative or protection. The trims have a specially punched flange, which allows the profile to be formed by hand, allowing curves to be created. These profiles are chemical and atmospheric resistant. These profiles are recommended in areas such as food processing industries, breweries, hospitals and exterior use. Its smooth and non-porous surface means its especially difficult for the adhesion and survival of bacteria and other Micro-organisms.

### Technical Features and Tests

Stainless Steel Tile Trim profiles are available in polished finishes.

### Dimensions

| Metric H x L | Imperial H x L |
|--------------|----------------|
| 10mm x 2.5m  | 3/8" x 8.2'    |
| 12mm x 2.5m  | 1/2" x 8.2'    |

| Element | Actual %    |
|---------|-------------|
| C       | 0.2% - 0.6% |
| Mn      | 2.00%       |
| Si      | 0.10%       |
| P       | 0.75%       |
| S       | 0.05%       |
| Cr      | 0.03%       |
| Ni      | 18-20 %     |
| N       | 10.50%      |

### Cleaning and maintenance

Advance Cleaning for Stainless Steel Discoloration.

#### Tarnish or Water Stains:

The first stage of corrosion is completely on the surface and easily removed by most commercial metal polishes. Discoloration will be greater at indoor facilities due to the chlorine vapour trapped in an inside environment.

#### Lightning Rusting:

Rust is visible at this stage but little or no pitting has yet occurred. A stronger cleaning agent such as Simichrome polish is required.

#### Heavy Rusting:

A deep coat of rust with surface pitting can develop if corrosion has been left unchecked for a long time. For advanced corrosion, naval jelly is recommended.

#### Surface Restoration:

To remove or reduce pitting damage caused by corrosion, Scotchbrite works will for this purpose. Work only in the direction of the existing grain and don't use steelwool.

### Installation

1. Select profile according to tile thickness.
2. Trowel tile adhesive over the area that forms the perimeter of the tiled covering.
3. Press the perforated anchoring leg of the profile into the tile adhesive and align. Mechanical fix if required.
4. Trowel additional adhesive over the perforated anchoring leg to ensure full coverage.
5. Embed the tiles so that the tiled surface is flush with the top of the profile. The profile should not be higher than the tiled surface, but rather up to approx 1mm lower.
6. Fill the joint completely with grout



# Decoline

www.tfc.co.za • +27 11 822 6901 • genesis@tfc.co.za • heidi@tfc.co.za

PVC Trims • Stainless Steel Stair Nosings • Metal Profiles – Aluminium & Stainless Steel • Polymer Skirtings & Quarter Rounds •

Aluminium Skirtings • Decorative Profiles & Listellos