



MICHELLE LINEAR 70MM HORIZONTAL

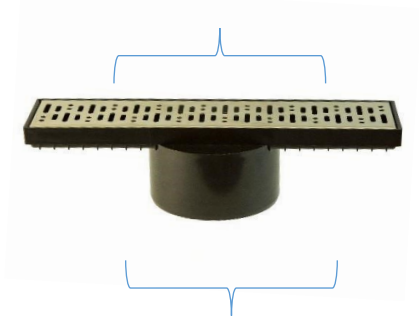

(300mm/600mm/900mm)




TECHNICAL PRODUCT INFORMATION

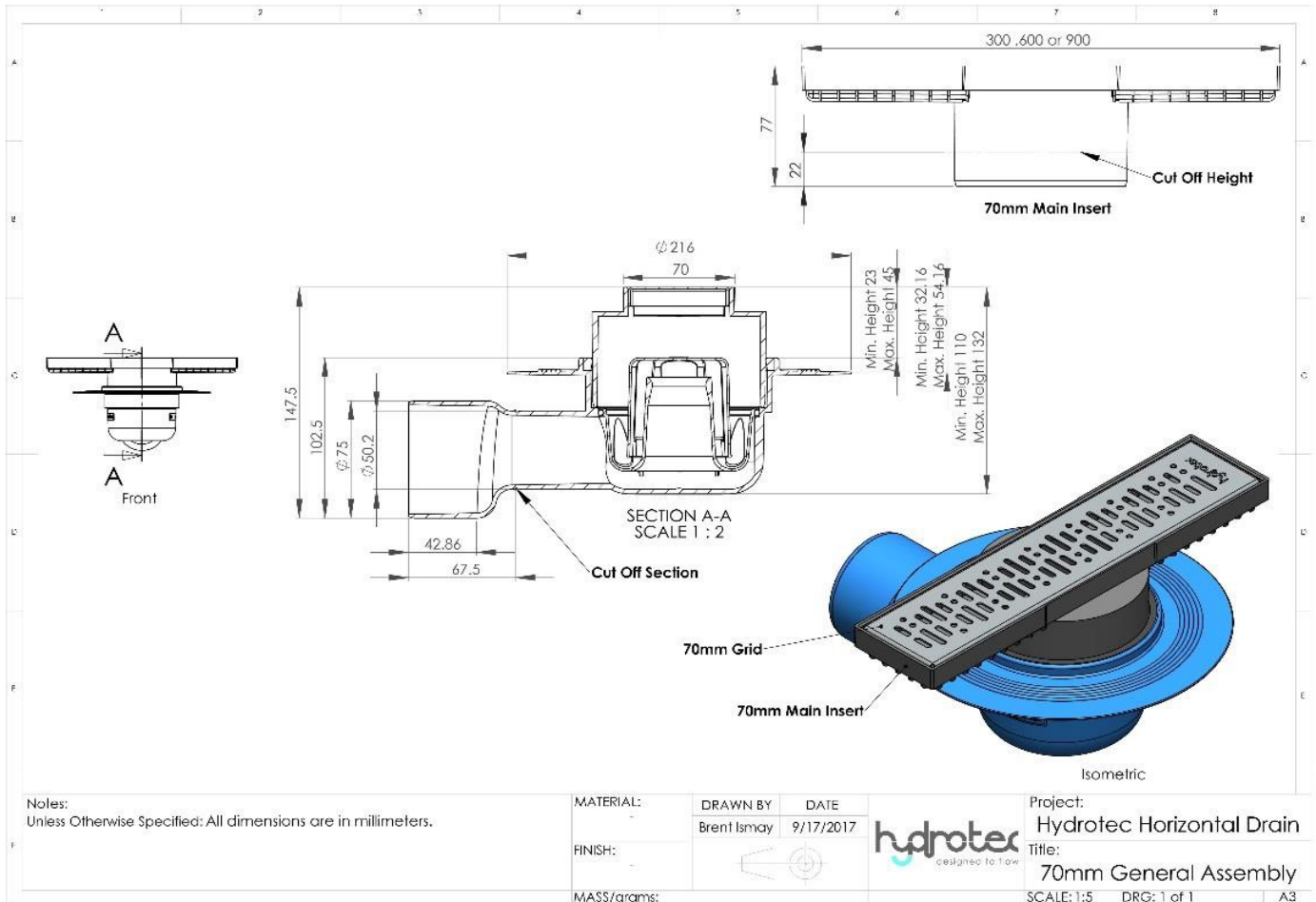
Product Description	Michelle 70mm Horizontal Shower Drain
Product Code	HTM100-300C (H) Horizontal HTM100-600C (H) Horizontal HTM100-900C (H) Horizontal
Grate/Grid	304 Grade Punched Stainless Steel Grate/Grid
Outlet	Can accommodate both 50mm & 75mm pipe sizes (Side outlet)
Flow rate	54L p/m
Water Seal/Odour Trap (Top trap lid and bottom trap)	75mm deep. Removable odour trap providing full access for maintenance and cleaning
Application	Shower, balcony, roof outlets and wet rooms
Guarantee	Life time guarantee
Quality Assurance	Our factory is certified for TS16949 (automotive industry)
Stockist	Various Merchants
Bill of Materials	ABS Plastic – Impact resistant, tough, durable, has good heat tolerance. Resistant to most alkalis and acids. Product recyclable. Stainless Steel 304 – Most versatile and widely used. Excellent forming and welding characteristics. Easy to clean. Product recyclable.
Key Benefits	<ul style="list-style-type: none"> • 100 % Manufactured in South Africa • Shallow running system with odour trap or water seal • Made from durable ABS Plastic • Maintenance friendly removable grate and odour seal for easy access to clean • Clean and elegant grid/grate pattern for maximum water flow • Designed to work with both 50mm and 75mm water pipes • Height adjustable • Fixed textured Flange accepts cementitious or torch on bitumen waterproofing • Installation cover protects the product during construction • Suitable for Flush to Floor Showers • Eco friendly, Modular Stacking System, less components, time and cost effective • Recyclable

COMPONENTS

<p>Stainless Steel Grid/Grate</p>	<ul style="list-style-type: none"> • Stainless Steel grate/grid • Punched for optimal water flow • Provide smooth, elegant & authentically pleasing finish • Removable for safe & easy cleaning • AVAILABLE IN BLACK, CHAMPAGNE, BRONZE ON REQUEST 	<p><i>Material – 304 Grade S/Steel</i></p> <p><i>300mm x 70mm x 20mm</i></p> <p><i>600mm x 70mm x 20mm</i></p> <p><i>900mm x 70mm x 20mm</i></p> 
<p>Base Connector</p>	<ul style="list-style-type: none"> • Grid/Grate holding device • Height adjustable • UV Protection Agent • ABS Plastic • AVAILABLE IN BLACK ON REQUEST <p>Max Cut off Height – 22mm Spigot – 110mm</p>	<p>Base Connector – dove grey</p> <p><i>Material – ABS Plastic</i></p>
<p>Top Trap Lid</p>	<ul style="list-style-type: none"> • Fits securely over the Bottom Trap and TPE Seal • Prevents odour from escaping 	 <p><i>Material- ABS Plastic</i></p>

<p>Bottom Trap & TPE Seal</p>	<ul style="list-style-type: none"> • Component forms the base of the 75mm deep water trap • Sits firmly in Base(A) • Trap allows for securing and retrieving flushed valuables 	 <p><i>Material – ABS Plastic Material – O ring – Nylon</i></p>
<p>Base & EPDM Seal Horizontal</p>	<ul style="list-style-type: none"> • Option – 75mm/50mm side outlet • Holding device for water trap and all other components • EPDM Seal assist with securing the Base Connector and acts as double odour seal • 	 <p><i>Material – ABS Plastic Material – Nylon</i></p>

DIMENSIONS



DIMENSIONS					
Component	Material	Components	Linear/300	Linear/600	Linear/900
Grid/Grate	304 Grade S/Steel		285mm (l) 60mm (b) 10mm (h)	585mm (l) 60mm (b) 10mm (h)	885mm (l) 60mm (b) 10mm (h)
Base Connector	ABS		300mm (l) 70mm (b) 20mm (h)	600mm (l) 70mm (b) 20mm (h)	900mm (l) 70mm (b) 20mm (h)
Water Trap	ABS	105mm (l) 105mm (b) 75mm (h)			
Universal Base-Height	ABS	84mm (h)			
Universal Base with Flange at Widest Point 75mm	ABS	278mm			
Universal Base with Flange at Widest Point 50mm	ABS	216mm			