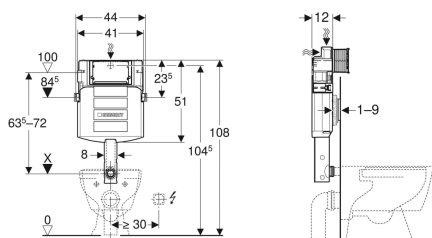


Geberit Sigma concealed cistern 12 cm, 6 / 3 litres



Example image



Application purposes

- For masonry walls
- For installation in part or room-height prewall installations
- For installation in room-height installation walls
- For floor-standing and wall-hung WCs
- For single flush, dual flush or stop-and-go flush

Characteristics

- Concealed cistern with front actuation
- Concealed cistern, fully insulated against condensation
- Immediate post flush possible with factory setting
- Flush bend fitted

Scope of delivery

- Water supply connection Rp 1/2" - R 1/2", compatible with MF, with integrated angle stop valve and hand wheel
- Protection box for service opening
- Flush bend with recess shells

- Tool-free installation and maintenance work on concealed cistern
- Water supply connection on the rear or top centre
- Water supply connection, dezincification-resistant
- Protection cover box for service opening protects against moisture and dirt
- Protection box for service opening can be cut to length

Technical data

Flow pressure	0.1-10 bar
Flush volume, factory setting	6 and 3 l
Flush volume large, adjustment range	4 / 4.5 / 6 / 7.5 l
Flush volume small, adjustment range	2-4 l

- Protection plug
- 2 slotted flat irons
- 2 fixing brackets
- Fastening material

Art. no.	B	H	T
109.310.00.5	44 cm	51 cm	12 cm